



## PC Software ETL DataView f. series 400, Version 3 Data management package

Item nr.: 205060

### Introduction

**ETL DataView 3** is the third generation of data management software for administration of device settings and creation of individual test plans. These test plans form the base for a repeatable test operation which is visualized in the software.

### Features

ETL DataView 3 forms a modern man-machine interface which according to our clients has "unequaled opportunities".

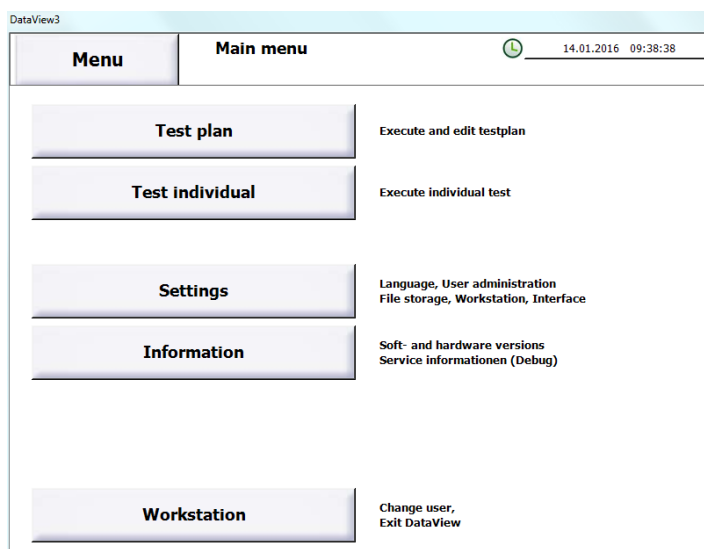
Thanks to the clear structured environment, it is also for people without programming skills easily possible to familiarize themselves with the functionality of ETL DataView 3.

Therefore it doesn't matter which user interface is used, the look and the usability will always stay the same. Operation is intuitive, clear and very open, depending on the rights for the outer world, our motto is: "Software and hardware together to give a modern, intuitive and simple platform".

Additional features:

- Operation and optical design of the software is always the same, whether on the PC or on the tester
- Portable system in Windows environment with the appropriate rights
- ETL DataView 3 is totally independent of the Windows environment
- Non-proprietary data structure based on the XML format
- No direct database generation by the software
- Easy to embed into existing database structures due to the use of XML
- Creation of individual variables possible
- No complicated programming to change parameter settings

### Navigation



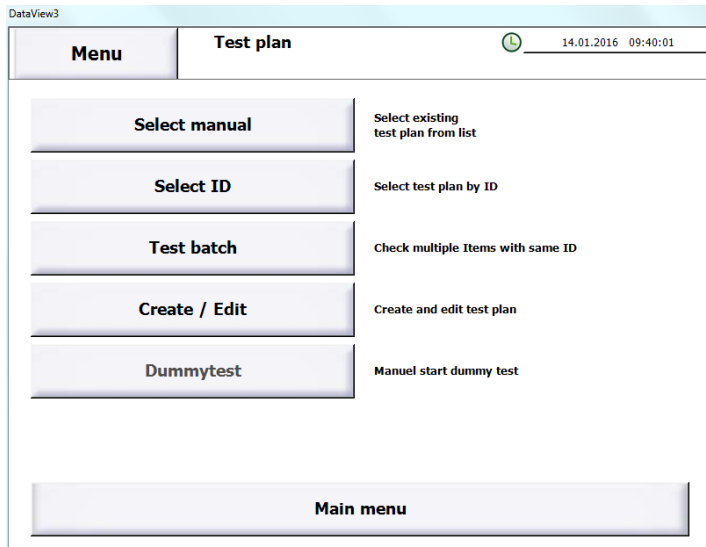
**ETL DataView 3** is optimized for touchscreen operation, but can also be controlled with mouse and keyboard.

The software has a clear and simple structure to make the navigation faster and more understandable.

All settings for a main topic can be set in the respective sub-menu and are also sorted by technical

topic. Single parameters can all be set by a virtual keyboard which is depended on the parameter. A normal keyboard is used for all text inputs and a numerical keyboard for numerical parameters.

## Using the test plan



Using the **ETL DataView 3** software an extensive automated test can be quickly and easily created in a test plan. The test plan can be either manually or automatically selected by the tester.

Therefore an ID can be assigned to every test plan. This ID can be for example an article number which

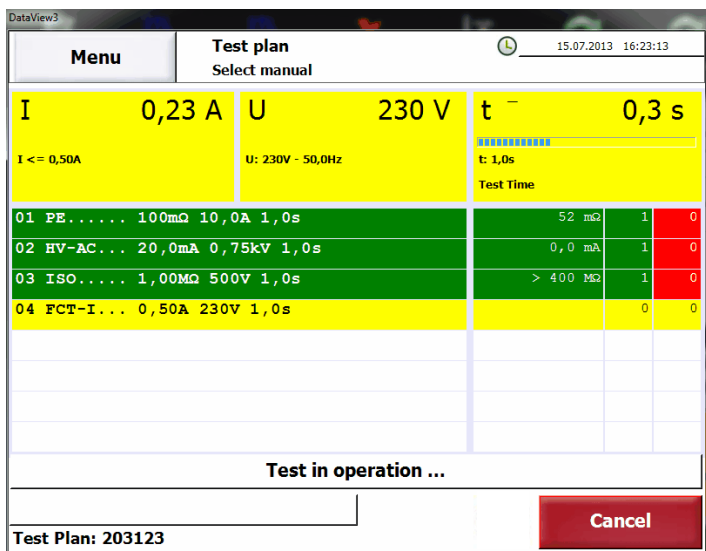
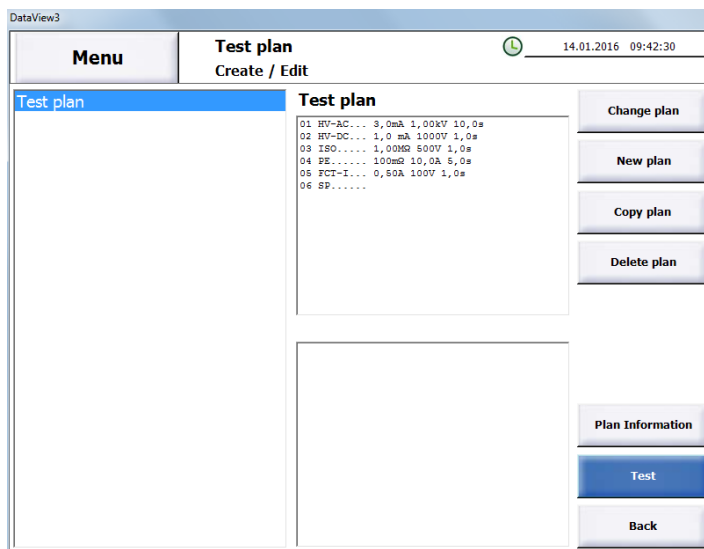
can be read by a barcode scanner. This is only one example how the software can assure that the DUT is tested with the right test plan.

Any other relevant information and data can be read or put in during the test plan with a test step called data input.

A batch test and automatic dummy tests can also be set and in the through the test plan menu

There is a test plan editor for creation and editing of test plans, which comes with the following functions:

- Adding new test steps
- The available test steps depend on the existing test modules
- Edit existing test steps
- Copy, Cut, Paste and deleting existing steps
- The sequence of test steps can be easily changed with the help of arrow buttons
- The function of the test plan can be checked directly from the editor using the "Check button"
- Display text and images before, during and after every test step
- Directly see the parameters of every test step

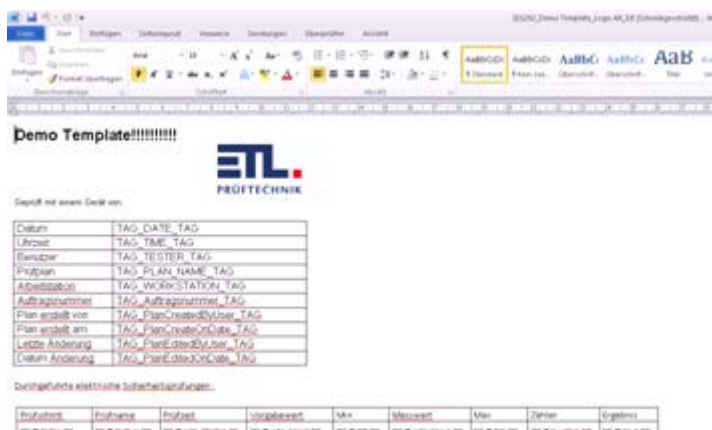


The test steps are processed and displayed in a tabular order.

Every test step will be coloured depending on the test result and status of the test step.

There is also a statistic for every step where the result is shown.

## Test results



The test results are automatically saved in a file or sent directly to a printer after a test plan is passed. The saved files can have the following formats:

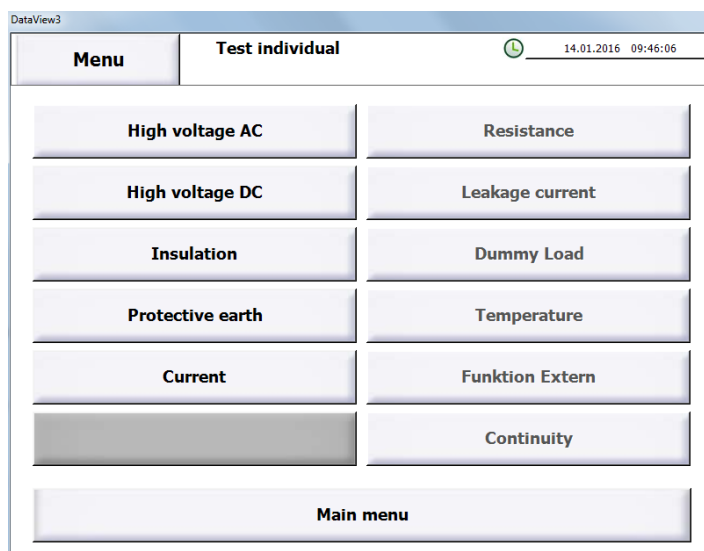
- XML
- HTML
- PDF
- CSV

The appearance and the shown results can be completely modified by using a template. A template can be created and edited by every common WYSIWYG editor (Microsoft Office, Open office). The result files can be saved locally, on a USB flash drive or in the network.

## Individual test

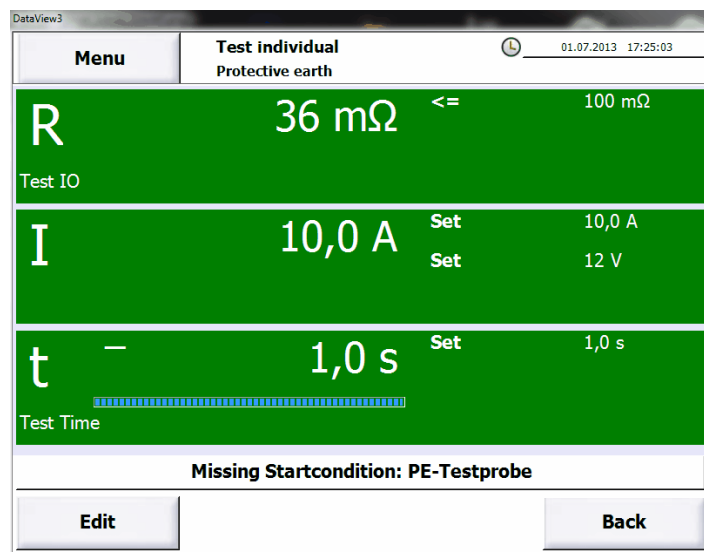
A quick single test is also available through the single test menu. Every built-in test type has its own button to quickly access the test types and their parameters.

The parameters always correspond to the last selected settings. A test report is not available for a single test.

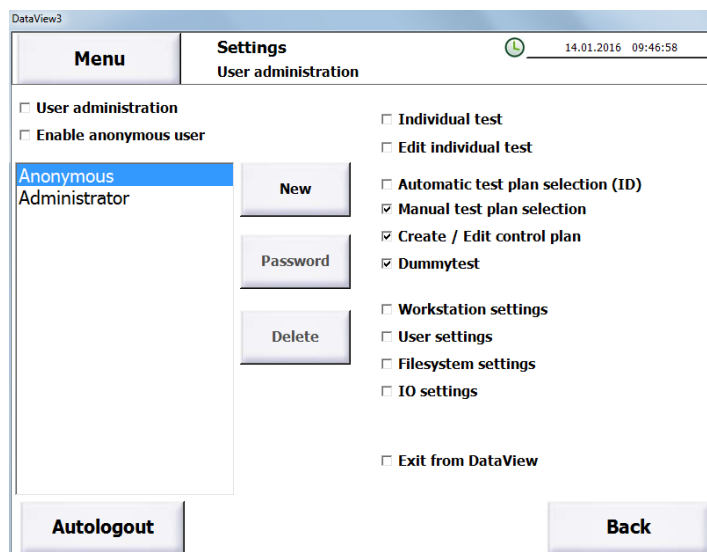


## Test window

During a test all relevant actual values and limits are clearly displayed in the test window. Due to the coloring of the background, the result can immediately be obtained as it is shown in the screenshot on the right, where the test was successful.



## User- and rights management



ETL DataView 3 has a complete user management, where specific rights can be assigned to every individual user. If no user management is required, it can be completely deactivated. The settings include the following rights:

- Individual test
- Edit individual test
- Automatic test plan selection (ID)
- Manual test plan selection
- Create / Edit test plans
- Dummy test
- Workstation settings
- User settings
- File system settings
- IO settings
- Exit ETL DataView 3

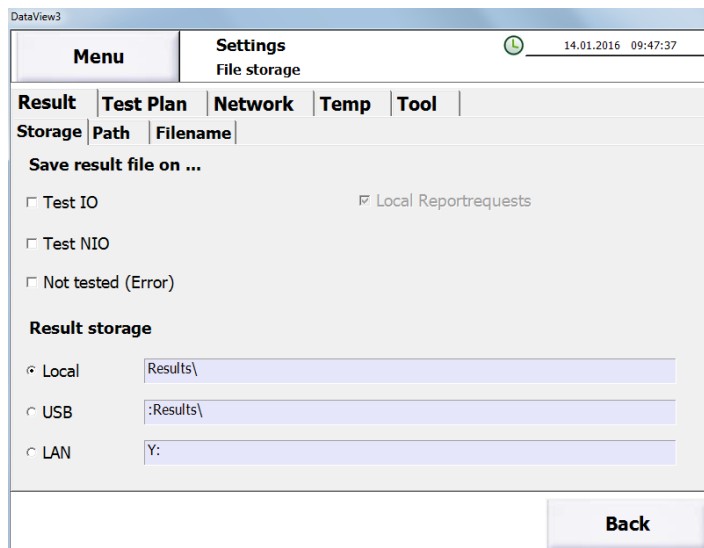
If a user is created and the user administration is active, the name of the active user can also be shown in the test protocol.

## Data storage and networking functions

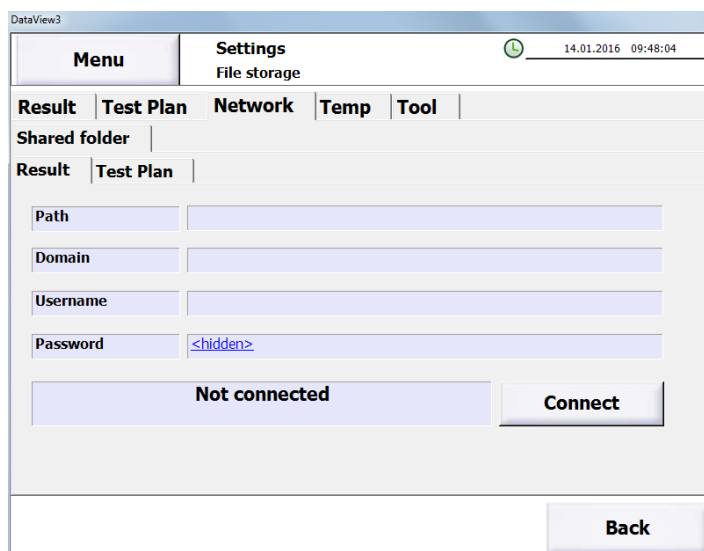
The test results can be stored locally, on a USB flash drive or in the network. DataView is able to create subdirectories in the selected folder.

The name of the sub directory can be set by the user and can include up to 5 different parts, such as the name of the test plan or the name of the workstation etc. The file name of the test result can be set in the same way. It can include important data such as the serial number or the date and time when the DUT was tested.

If the file storage should be done on the network, the software is able to log on to a domain. A different folder can be selected for test plans and test results. In case of a connection loss to the network drive the data will be stored locally as long as the connection is not reestablished. The locally saved data will then be automatically stored to the network drive.



The screenshot shows the 'DataView3' application window with the 'Settings' tab selected under 'File storage'. The date and time are 14.01.2016 09:47:37. The 'Menu' bar includes 'Result', 'Test Plan', 'Network', 'Temp', and 'Tool'. Below this, there are sub-menus for 'Storage', 'Path', and 'Filename'. The main area is titled 'Save result file on ...' and contains three radio button options: 'Test IO' (selected), 'Test NIO', and 'Not tested (Error)'. A checkbox for 'Local Reportrequests' is checked. Under 'Result storage', there are three radio button options: 'Local' (selected), 'USB', and 'LAN'. Each option has a corresponding text input field: 'Results\' for Local, ':Results\' for USB, and 'Y:' for LAN. A 'Back' button is located at the bottom right.



The screenshot shows the 'DataView3' application window with the 'Settings' tab selected under 'File storage'. The date and time are 14.01.2016 09:48:04. The 'Menu' bar includes 'Result', 'Test Plan', 'Network', 'Temp', and 'Tool'. Below this, there are sub-menus for 'Shared folder', 'Result', and 'Test Plan'. The main area is titled 'Shared folder' and contains four text input fields: 'Path', 'Domain', 'Username', and 'Password'. The 'Password' field has a '<hidden>' placeholder. Below these fields is a 'Not connected' status indicator and a 'Connect' button. A 'Back' button is located at the bottom right.

## Any questions?

If you have any questions regarding **ETL DataView 3** or you are interested in a demo version of the software please contact us under +49 711 83 99 39-0 or send an E-Mail to [info@etl-prueftechnik.de](mailto:info@etl-prueftechnik.de).

We look forward to your call!